



Otford Primary School-23 January, 2026

"Pupils' thirst for learning continues throughout the school, with pupils rising to the challenges they are set..." Ofsted 2023

Letter from the Head Teacher

Dear Parents,

There is so much to celebrate at the start of this year, and we are incredibly proud of how the children have returned to school following the holidays.

You will have received your class newsletter, which we hope provides a helpful overview of the learning planned for this term. As always, if you feel your child would benefit from additional homework, please do not hesitate to contact the class teacher, who will be happy to support you.

Please see below an update from Mrs Cornelius and Mrs Williams, who will be running a Parent Support Café in February. We hope this initiative will be both helpful and supportive for our families and will respond to some of the feedback highlighted in the recent parent survey.

In addition, Parent Forums will continue after half term. I will share the dates with parents in the next SWAY. I have found these forums to be an incredibly valuable opportunity to discuss general concerns as well as to celebrate areas of development within the school alongside parents. I do hope parents feel that they are helpful too!

We very much value our partnership with families and encourage you to continue to reach out if you have any concerns or questions.

Warmest wishes for the weekend,

Mrs H Roberts

Parent Support Cafe



Are you concerned about your child's sleep or daily routines?

Do you have questions about friendships, family changes, or your child's social and emotional wellbeing?

We are pleased to invite you to our new Parent Support Café. The first one will be held on Wednesday 11th February at 9 am, during Children's Mental Health Week.

This informal, friendly session is an opportunity for parents and carers to meet Mrs Peppie Cornelius (Deputy Head & Wellbeing Lead) and Mrs Paula Williams (Assistant Head & Inclusion Lead) with a focus on Well-being support. This could be linked to daily routines including sleep, concerns about family relationships, social and emotional issues. They will be available to listen, offer wellbeing advice, and signpost families to any support that may be helpful.

The Parent Support Café is designed as a relaxed, safe space to chat, ask questions, or simply enjoy a cup of tea or coffee. We hope to run these sessions every term, giving families regular opportunities to connect and access support.

All parents and carers are very welcome. To help us gauge numbers, we kindly ask that you register your interest using the link below and give us an indication of any particular area you would like to discuss:

Parent Support Cafe – Fill out form¹

Otford Primary School

PARENT SUPPORT CAFE

LET'S TALK

WEDNESDAY
11
FEBRUARY
9.00-10.00

This informal, friendly session is an opportunity for parents and carers to meet with Senior Leaders - with a focus on well-being support. Do come and join us if you have any questions or concerns.

EVERYONE IS WELCOME

- ✓ Meet other parents
- ✓ Discuss areas of concern
- ✓ Find out about support

For More Information contact the school office: secretary@otford.kent.sch.uk

Community Leaders and Community Ambassadors for the Spring Term



Year 2 Hannah and Milo

Year 3 Miya J and Elliot P

Year 4B Alex C and Arianna T

Year 4AG Theo W and Seren H

Year 5AH Pippa S and Jake L

¹<https://forms.office.com/Pages/ResponsePage.aspx?id=gMBp23FnXkiR9d-9YNKUc7NHXY9-smZJoUbRgHbrG69UMURaUkIROEJPTkzVUDVZN0wzWVI2R0ZFWs4u>

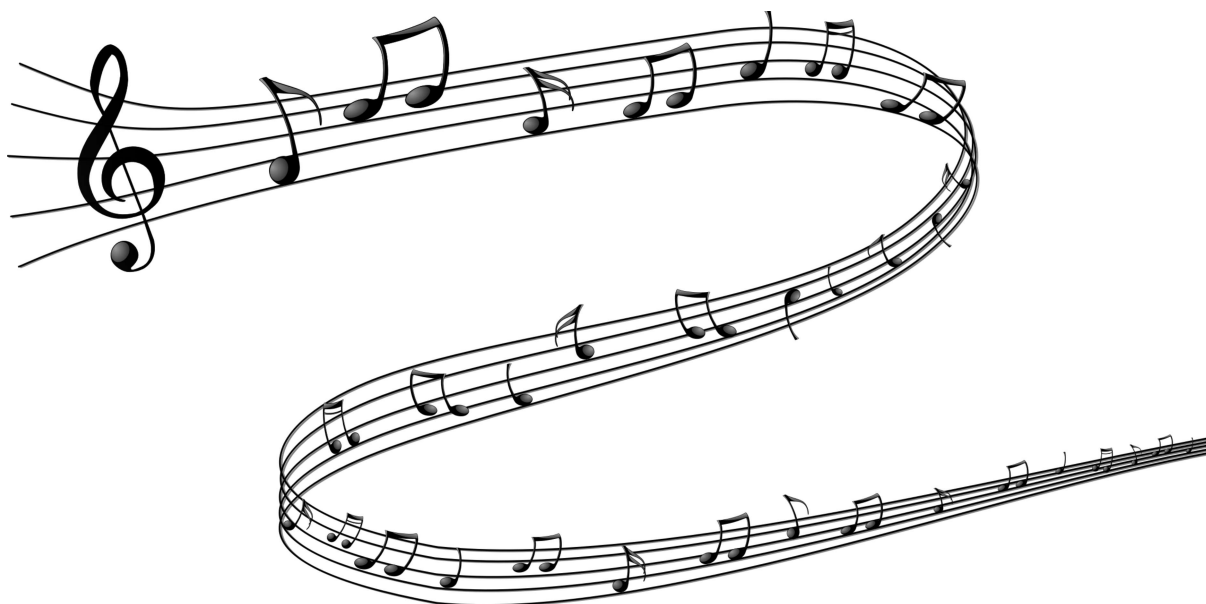
Year 5H Arlo B and Lily K

Community Ambassadors

6L Anna, Emma, Kunal, Benjy, and Ellis

6CC Raan, Dylan, Ettie, Sophie, and Emilia

MUSIC UPDATE



Music clubs are now in full swing.

Monday lunchtime Songdrawing - KS1 in the library *Thursday lunchtime* 12.00 Ukulele club - years 5 and 6 in the music room 12.30 Rhythmix - KS2 in the music room

Drum teacher update We hopefully have a new drum teacher starting in the next few weeks. I will contact all those who were having lessons with more details. If you would like your child to have drum lessons please email me for more details

Louise.brown@otford.kent.sch.uk

Music opportunities during February half term

This February half term, Kent Music are offering a range of exciting courses and musical experiences. Applications can be made through the Kent Music website

<https://www.kent-music.com/courses/?type=half-term>

Mon 16th Feb Junior Wind Band Strings Day

Tuesday 17th and Wednesday 18th Feb Junior Come and Sing (come to one or both days)

Thursday 19th Feb Music Tech experience day

ATTENDANCE CERTIFICATES

Bronze, Silver and Gold certificates have been awarded to those pupils with 95% and greater attendance. Gold was awarded to those with 100% attendance. Well done!!



NEW PLAYGROUND EQUIPMENT COURTESY OF THE PTFA

Thanks so much to the PTFA for all of their hard work organising and fundraising for the school, and thank you to everyone for your support! Your efforts and donations make a real difference to the school.







PTFA UPDATE

🍌 Update from the PTFA 🍌

Happy New Year!

A Big Thank you to Andrew Preston, School Governor, who has donated £5000 to the PTFA. We are absolutely overwhelmed by this generosity, thank you!

Christmas Bonanza - Raised £869! We were overwhelmed by the offers of support, and by the amount of people who came to the event. A big thank you to everyone!

We would also like to thank the previous PTFA committee members for all the hard work in getting the new gym equipment purchased and installed on the KS2 playground - it seems to be very popular with the children!

Upcoming Events:

We are pleased to announce that we are in the midst of arranging some fun events for the children, such as a colour run and an Easter Hunt - More details coming soon!

Save the Date

13th February - Year 5 Cake Sale

11th July - Summer Festival 

We'd Love to Hear From You! We truly welcome your ideas, feedback, or offers of help. Please don't hesitate to get in touch at ptfa@otford.kent.sch.uk.

Thank you for your continued support—we can't wait to make this a fantastic year together!

Warm wishes,

The PTFA Team

Thank you

Sam Bennett/Carly Symes PTFA Co-Secretary

COMMUNITY NOTICE BOARD



SEVENOAKS PCN



Newsletter for Parents

Have a Brew-illiant Monday

Everyone wants to feel connected, understood and accepted, but when that doesn't happen, it can feel lonely - even if you're surrounded by people.

Building meaningful relationships can be hard, but finding people who share your interests can help. **Try joining a club, class or local group (see the next page for ideas!).**



How can you be a good listener for a friend who is struggling?

"You don't need to have answers or 'good' responses, just providing the space is enough"

Pay attention

Validate their feelings

Acknowledge their experiences

Makes space for silence

SEVENOAKS PCN

Newsletter for Parents

brew
monday.

SAMARITANS

Have a Brew-illiant Monday

What is Brew Monday?

It aims to combat loneliness and provide emotional support, especially during the winter months when feelings of isolation can be more pronounced.

It encourages individuals to take a break and have meaningful conversations to lift their spirits.
Promotes social connections and mental well-being.



Feeling alone with your problems can have a big impact on your mental health. 'Brew Monday' encourages you to reach out to a friend, family member or teacher for a chat.

"In this together" - take time to really listen to another person and allow them to work through what's on their mind

SEVENOAKS PCN

Newsletter for Parents



Signposting

For Parents

NHS Kent & Medway Talking Therapies
NHS Kent Community Health NHS Foundation Trust

Fancy a Cuppa?

A Cuppa, Connection & Conversation

Brew Monday,
19th January,
10am - 1pm
Edenbridge Memorial Health Centre, Edenbridge

Complimentary cakes & hot drinks available

- HERO Service** - Support for those who privately rent and owner occupiers. Find out about benefits and budgeting advice we can offer.
- One You Kent** - Healthy changes start with little changes. Come and talk to our lifestyle advisers about how we can support YOU!
- Sevenoaks Primary Care Network** - BP checks and talk to our Health & Wellbeing Coach.
- Ageing Well Clinic** - Find out about our health and wellbeing checks here at Edenbridge.

Description

If you work from home (like us!), it can be isolating and lonely at times, so we decided to create these meet ups to give you the opportunity to meet like-minded working women.

The mornings are relaxed and informal, we have a dedicated area in the George & Dragon Pub, Chislehurst, Sevenoaks, Kent TN13 2RW. There will be no standing up and introducing yourself to the group just the opportunity to mix with other working women and make genuine connections!

9.30-10.30am - Networking over a brew!

10.30-11.00 - Business Spotlight **Sevenoaks Samaritans**.

11.00-12.00pm - Conversing or continued networking

This meet up is £10.50 per ticket and your ticket purchase supports a local charity Sevenoaks Samaritans. There will be complimentary tea and coffee when you arrive. We look forward to seeing you there!**

For Young People

House in the Basement
<https://houseinthebasement.weebly.com/>

Sevenoaks Youth Trust
<https://sayt.org.uk/>

YMCA WK Youth Clubs
<https://ymcatg.org/youth-work/wk/>

YMCA East Surrey Youth Clubs
<https://www.ymcaeast Surrey.org.uk/services/cyp/youth-family/youth-clubs/>



Otford Methodist Church
TUESDAYS
3.30 - 5pm
 Parents & Children

Club dates Terms 3 & 4

Tue 13 Jan

Tue 27 Jan

Tue 10th Feb

Tue 3 Mar

Tue 17 Mar

Tue 31 Mar

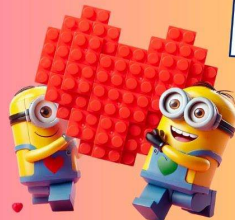
Toast Club is open to all primary school families. Come and enjoy being involved together, in a relaxed atmosphere, with refreshments from the start, and of course Toast with a variety of spreads! On any Toast day, we offer a variety of craft, an animated bible story with 'Veggie Tales', fun with puppets, maybe some illusions and plenty of fun!



Adult & Child Build Event



LOVE
 Lego®



Celebrate the LOVE of LEGO® with your loved one. ♥ Enjoy unlimited free play, explore exclusive LEGO® Technic sets and get creative with LEGO® mosaic art – all in a relaxed fun environment

2pm-4pm where imagination takes the lead ♥

**Sunday 8th
 February**

Kings Hill Community
 Centre

£25

**Book!
 Now!**



Includes a LEGO®
 craft take-home

bricks4kidz.uk/kent

Taster Day at Maidstone Grammar School for Girls



Maidstone Grammar School *for Girls*

Non sibi sed omnibus



We are excited to announce the release of dates for our next **Year 5 Taster Lesson!** These events are a wonderful opportunity for both parents and students to experience the vibrant community and outstanding education offered at Maidstone Grammar School for Girls (MGGS).

Give your daughter the chance to ignite her curiosity with our interactive Taster Sessions. These sessions are a fantastic way for Year 5 students to get a taste of life at MGGS:

- **A Medley of MFL**

Wednesday, 4th February 2026

4.00pm - 5.00pm

Girls will be introduced to French at MGGS. At MGGS Year 7 students currently study two language options, French and also either Spanish or German.

Booking a place is quick and easy! Simply visit our ²**online booking page**³ to secure your spot at any of the events.

Don't wait too long - spaces fill up fast due to the popularity of these events.

²<https://www.mggs.org/joining-us/joining-our-year-7/open-events-for-joining-in-year-7/#y5transition>

³<https://www.mggs.org/joining-us/joining-our-year-7/open-events-for-joining-in-year-7/#y5transition>

Feel free to share this information with friends and classmates, as they, too, are welcome to experience MGGS!

We will be announcing more **Year 5 Taster Lessons** for the upcoming term soon. Once registered, you will receive regular updates about future events. If your daughter is unable to attend a pre-booked event, please notify us in advance so we can offer the place to another student.

We can't wait to welcome you to MGGS, where you can experience firsthand the warmth, community spirit, and excellence that defines our school. Together, we embody the MGGS motto: *Non sibi sed omnibus* - Not for oneself but for all.

Learn More about MGGS and explore additional resources:

- **School Prospectus⁴**
- **Year 7 Curriculum Booklet⁵**
- **Extra-Curricular Activities & Clubs⁶** • **Ofsted March 2023⁷**

Porchlight



Dear Otford Primary School

We just wanted to say how grateful we are for your donation of £ 243.94. Carol concerts are an amazing way to bring people together and to get people involved, so thank you for your support. It really is going to make a difference!

Your generosity will provide vital help for people in crisis for whom homelessness seems inevitable this Christmas - your donation will make a life changing difference to those experiencing, and at risk of, homelessness.

⁴<https://www.mggs.org/joining-us/joining-our-year-7/prospectus/>

⁵<https://www.mggs.org/your-journey/years-7-9/curriculum-in-years-7-9/>

⁶<https://www.mggs.org/your-journey/enrichment/extra-curricular-activities-and-clubs/>

⁷<https://www.mggs.org/key-information/ofsted/>

Our outreach teams are out across Kent, working with people sleeping on the streets and giving them the support they need to get them into the warm and recovering from the trauma of living on the streets.

With the recent funding cuts, the ongoing housing crisis and rapidly rising rental prices, this winter is particularly tough for so many people across Kent.

I hope your carol concert was fantastic, and following on from it, I hope you have a wonderful festive break.

Kind Regards,

Lily Turvey

Fundraising Administrator Porchlight

February Half Term

Next Thing Education Presents

LIMITED SPACES
BOOK BY
6TH FEB

TECH CAMP

FEBRUARY CAMPS 2026

Sevenoaks Primary School, TN13 3LB

£39.99 PER DAY OR £175 FOR 5 DAYS
9 AM - 4PM, AGES 5-11

FIND YOUR NEAREST CAMP ON OUR WEBSITE
www.nextthing.education

CHILDCARE VOUCHERS AND TAX FREE CHILDCARE ACCEPTED

FEB HALF TERM 2026

Coding & Robots + Circuitry & Inventions + LEGO Engineering + Minecraft Madness + Tech Fun

Movie Making | Video Game Design | Robot Coding | STEM Experiments | Engineering

Different activity theme each day, please check our website for your camp activities

16TH - 20TH FEBRUARY - LIMITED SPACES

What Parents Say

"Absolutely Fantastic!
First time attending &
my son loved it!"

★★★★★

HOW TO BOOK

STEP 1 SCAN THE QR CODE

STEP 2 FIND YOUR NEAREST CAMP

STEP 3 BOOK ONLINE SPACES LIMITED

BOOK

W: WWW.NEXTTHING.EDUCATION
E: INFO@NEXTTHING.EDUCATION T: 01442 873150

WE ACCEPT CHILDCARE VOUCHERS & OFFER TAX-FREE CHILDCARE!

MEGA CAMPS
KIDS DAY ACTIVITY CAMPS

CHILDCARE FROM 8am - 6pm

AGES 4 - 14

FEBRUARY CAMP 2026

SAVE ££'s - EARLY BIRD OFFERS END 31ST JAN
MULTIPLE LOCATIONS THROUGHOUT ESSEX, SURREY & KENT

WALL CLIMBING

MEGA ACTIVITY

ANIMAL WORKSHOP

FENCING

KIDS FAVOURITE

ARCHERY & AXE THROWING

2026 DATES LAUNCHED

DIFFERENT MEGA ACTIVITIES, ARTS & CRAFTS AND SPORTS AVAILABLE EACH DAY

MEGA FUN AT A LOCATION NEAR YOU!
CHECK WEBSITE FOR LOCATIONS AND DATES

BOOK ONLINE NOW!
Ofsted Registered **WWW.MEGACAMPS.NET**
OR CALL 0333 012 4378

ALL OUR STAFF ARE DBS CHECKED

MEGA CAMPS

2026 CAMP DATES

FEBRUARY
16TH FEB - 20TH FEB

EASTER*
30TH MAR - 17TH APR

MAY
26TH MAY - 29TH MAY

SUMMER
21ST JUL - 28TH AUG

OCTOBER & CHRISTMAS DATES TBC
Visit: www.megacamps.net
for your locations exact dates & more details

NERF GAMES & LASER TAG

CAMP HOURS 9am-4pm
EXTENDED HOURS 8am-6pm

NEW EXCITING ACTIVITIES & STRUCTURE
TO BE ANNOUNCED IN 2026

ARTS & CRAFTS

MEGA CAMPS

INFLATABLE FUN

MAKING MEMORIES

TAKE ADVANTAGE OF OUR PRICE FREEZE AND EARLY BIRD OFFERS!**
WWW.MEGACAMPS.NET

*DATES VARY DEPENDING ON LOCATION
** PRICE FREEZE UNTIL JAN 31ST 2026



February Half Term 2026

If your child is aged between 7 and 14 years of age and enjoys a range of sports such as

Football, Tennis, Netball, Rounders, Cricket, Basketball, Badminton, Dodgeball

and more, perhaps they would like to attend

St Gregory's Multi-Sports.

To book spaces simply click onto the jotform link and complete the form.

<https://form.jotform.com/253635031505045>

Or for more information email nbradbury@sgschool.org.uk

Where St Gregory's Catholic School, Sports hall entrance,

A26, St John's Road, TN4 9TX

Time 10am – 3pm

Cost £20 per day, if two or more siblings then £18 each per day.

Monday 16 February

Tuesday 17 February

Wednesday 18 February

Thursday 19 February

Friday 20 February

Please book early to avoid disappointment – places are limited!

FEBRUARY HALF TERM CLUBS

"Childcare during the holidays they want to go to"
Fresh air. Fresh activities. Fresh attitude.

SEVENOAKS PRIMARY SCHOOL










MONDAY 16th FEB

CAMPFIRE COOKOUT : PANCAKE DAY SPECIAL & BUSHCRAFT

Join us for the perfect winter campfire cookout! Make s'mores & pancakes over the flames. Learn different bushcraft fire lighting methods & enjoy a cosy & relaxed day filled with creativity, camp vibes, tasty treats and skills to take home and share with your family!

TUESDAY 17th FEB

TRIBAL ADVENTURE : BUILD, CRAFT & SURVIVE

Work together to build your tribal woodland camp & get creative with tribal crafts. Take on castaway style team challenges & games as you learn how tribes across the world live & survive in the wild!

WEDNESDAY 18th FEB

WE'RE GOING ON A YETI HUNT!

Track the legendary Yeti through the wild as you follow hidden clues, build clever traps, & craft your own Yeti footprints as proof of your discovery. Work together to uncover the forest's secrets and outsmart the wild's most mysterious creature.

THURSDAY 19th FEB

BUSHCRAFT V MINECRAFT

Team up to build your village using real bushcraft skills, earn reward pixels for completing survival challenges, & search for hidden resources to craft your tools. Take on Creeper & Lava Chicken games and experience Minecraft like never before! (Knowledge of Minecraft is not required!)

FRIDAY 20th FEB

NERF : WILDWEST SHOWDOWN

Let's go back in time and ride into a Wild West world of heists and outlaws! Join stagecoach standoffs, bank robbery missions, and cattle corrals in a full day of action packed Nerf games. A fast paced, high adventure Nerf experience! (Age 6+ recommended)

For more info on dates, locations and how the clubs run & to book: www.theoutdoorsproject.co.uk

OTFORD PRIMARY SCHOOL TERM DATES FOR 2026-2027



Term 1	
INSET DAY	Tuesday 1 September 2026
INSET DAY	Wednesday 2 September 2026
Starts	Thursday 3 September 2026
Last day of term	Thursday 22 October 2026
INSET DAY	Friday 23 October 2026
Term 2	
Starts	Monday 2 November 2026
Last day of term	Thursday 17 December 2026
INSET DAY	Friday 18 December 2026
Term 3	
Starts	Monday 4 January 2027
Last day of term	Friday 12 February 2027
Term 4	
Starts	Monday 22 February 2027
Last day of term	Thursday 25 March 2027
Term 5	
Starts	Monday 12 April 2027
Bank Holiday Monday	Monday 3 May 2027
Last day of term	Friday 28 May 2027
Term 6	
INSET DAY	Monday 7 June 2027
Starts	Tuesday 8 June 2027
Last day of term	Wednesday 21 July 2027

SITE MANAGER POSITION



We are recruiting for a new site manager! Please refer to the Kent Teach website for more details.

Oxford Instagram Account



We would love to remind everyone to visit our Instagram page at [Oxford_primary_school](#) where you will find lots of information and pictures regarding all the exciting things we have been doing at school. We regularly post news in the "stories" rather than posts as they can

easily become lost in the posts. We have 440 followers now- thank you for taking the time to look. You can find us here: [otford_primary_school](https://www.instagram.com/otford_primary_school)⁸

Should we receive any inappropriate content on this page the account involved will be blocked and reported to Instagram.

Early Birds Bookings

Dear Parents\Carers,

ParentPay should be used to make Early Bird Bookings. Bookings can be made until the end of the academic year and will need to be paid for at the time of booking. There is a limit of 45 children per day in place and spaces are allocated on a first come first served basis. Please find below link to guide to booking:

https://cdn.embedly.com/widgets/media.html?src=https%3A%2F%2Ffast.wistia.net%2Fembed%2Fiframe%2Ff7e9aflmga&display_name=Wistia%2C%2BInc.&url=https%3A%2F%2Fparentpay.wistia.com%2Fmedias%2Ff7e9aflmga&image=https%3A%2F%2Fembed-ssl.wistia.com%2Fdeliveries%2Fe388bc7ea8e1880c18a91c5f5ec1e32f6ca5d2bc.jpg%3Fimage_crop_resized%3D960x540&key=40cb30655a7f4a46adaaf18efb05db21&type=text%2Fhtml&schema=wistia&wvideo=f7e9aflmga

Parents who pay for sessions using childcare vouchers should email their requirements at least a term in advance to earlybirds@otford.kent.sch.uk. Early Birds will then manually add the required sessions onto ParentPay on your behalf. Sessions paid for by childcare vouchers are not guaranteed unless booked termly in advance.



⁸https://www.instagram.com/otford_primary_school